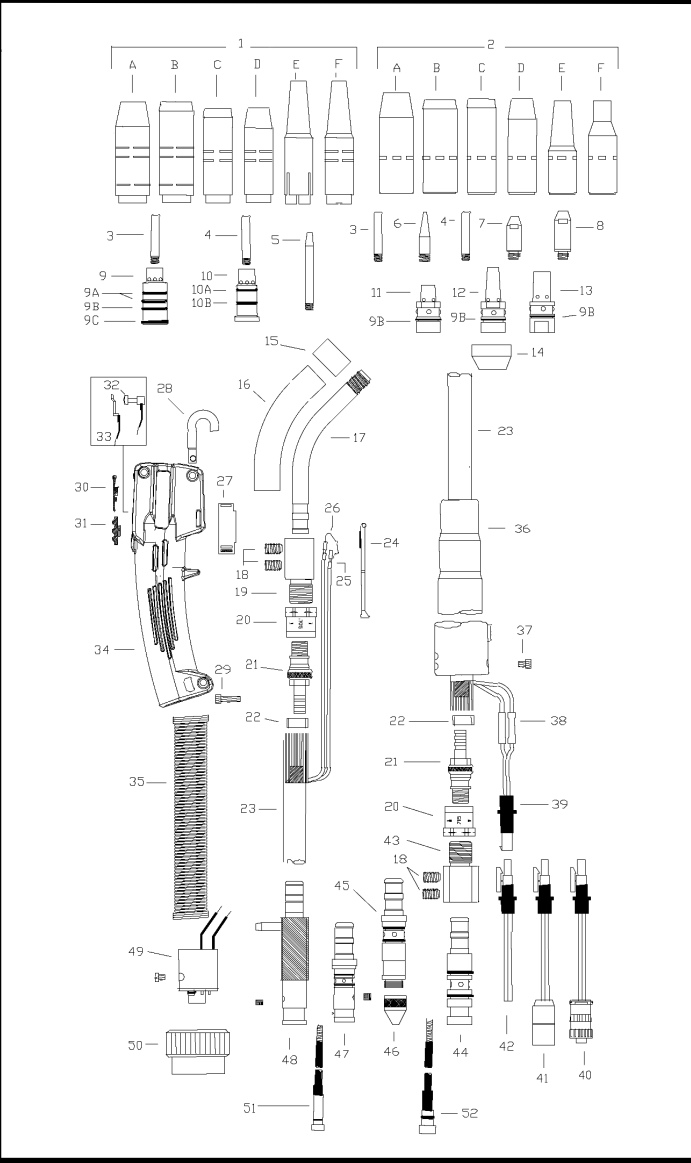


KENT ONE GUN

200 - 300 - 400 - 500 AMP AIR COOLED GMAW GUN

ITEM	Part Number	Description
1	See Reverse Side	Kent Nozzles
2	See Reverse Side	Tregaskiss Style Nozzle
3	See Reverse Side	HD Kent Tip
4	See Reverse Side	Standard Kent Tip
5	See Reverse Side	Kent Pipeline Tip
6	See Reverse Side	Kent Tapered Tip
7	See Reverse Side	8mm Contact Tip
8	See Reverse Side	10mm Contact Tip
9	See Reverse Side	HD Kent Gas Head
10	See Reverse Side	Standard Kent Gas Head
11	See Reverse Side	Gas Head Kent tip Treg. Nozzle
12	See Reverse Side	Gas Head 8mm tip Treg. Nozzle
13	See Reverse Side	Gas Head 10mm Tip Treg. Nozzle
14	02-420	Cap for 1/2" Body Tube
15	420	Cap for 1/2" Body Tube
16	02-013-4	200 Amp 1/2" Body Tube Insulator
17	02-013-#	Body tube insulator by the foot
17	02-021-4	200 Amp 1/2" Body Tube 4"
17	02-021-5	300 Amp 1/2" Body Tube 5"
17	02-021-6	400 Amp 1/2" Body Tube 6"
17	02-023-6	500 Amp 9/16" Body Tube 6"
17	02-023-8	500 Amp 9/16" Body Tube 8"
17	02-023-10	500 Amp 9/16" Body Tube 10"
		Custom lengths & Bends Available
18	02-110	Screw (Body Block)
19	02-003	Body Block 200 - 300 - 400 amp
	05-003	Body Block 500 Amp
20	02-041	Power Cable Nut 200-300-400-500 amp
21	02-046	Power Cable End 200-300-400 amp
	05-046	Power Cable End 500 amp
22	02-008	Ear Clamp 200-300-400 amp
	05-010	Ear Clamp 500 Amp
23	200APC	200 Amp Power Cable per foot
	300APC	300 Amp Power Cable per foot
	400APC	400 Amp Power Cable per foot
	500APC	500 Amp power Cable per foot
24	02-016	Switch Lever
25	02-015	Terminal
26	02-017	Switch Spring
27	09-204	Trigger Lock
28	09-074	Hang up Hook
29	075A	Handle Screw
30	09-201	Screw Cover
31	09-202	Dual Schedule Plug
32	09-206A	Dual Schedule post w/Lead
33	09-206B	Dual Schedule Spring Contact w/Lead
34	09-200	Handle Kit includes Screws & Caps
	09-200DS	Handle Kit for Dual Schedule Gun includes screws/slide switch/caps/contacts
35	229S	200 Amp Spring Cable Support
	429S	300/400/500 Spring Cable Support
36	09-754	Rear Cable Support
37	09-755A	Support Cap Screw
38	017	Butt Connectors
39	182F	Gun Lead Wire
40	01-001-182M	Elect. Connector
	01-001-182MDS	Elect. Connector for Dual Schedule Gun



ITEM	Part Number	Description
41	01-001-182L	Lincoln Elect. Connector
41	01-001-182LDS	Lincoln Elect. Connector for D/S Gun
42	182M	Male Lead Wire
43	09-005	Rear Block
44	09-755A	Screw
45	09-454	Kent Power Pin
46	09-453M	Miller Power Pin
46A	09-019	Miller Tapered Guide
47	09-453T	Tweco #4 power Pin
	09-453T5	Tweco #5 power pin
48	09-453L	Lincoln Power Pin
49	E4SP	Euro Connector Block
50	401-00-001	Euro Nut

CONSUMABLES PAGE

Kent Nozzles

1A	403B	HD Tapered Nozzle Copper
1B	403	HD Nozzle Copper
1C	402	Nozzle Brass
1D	402B	Tapered Nozzle Brass
1E	242	Pipeline Nozzle Brass
	256	Insulator for pipeline nozzle
1F	4395A	Pipeline nozzle Insulator Assy.

Tregaskiss Style Nozzles

2A	401-5-50	HD Nozzle Copper 1/4" recess
	401-5-62	HD Nozzle Copper 1/4" recess
	401-5-75	HD Nozzle Copper 1/4" recess
2B	401-6-50	HD Nozzle Copper 1/8" recess
	401-6-62	HD Nozzle Copper 1/8" recess
	401-6-75	HD Nozzle Copper 1/8" recess
2C	401-4-62	Nozzle Copper
2D	401-4-50	Nozzle Copper
2E	401-40-38	Pipeline Nozzle Brass
2F	401-42-50	Nozzle Copper 1/2" extra reach

Contact Tips

3	408-035	HD Contact Tip .035/0.9mm
	408-040	HD Contact Tip .040/1.0mm
	408-045	HD Contact Tip .045/1.2mm
	408-052	HD Contact Tip .052/1.4mm
	408-062	HD Contact Tip .062/1.6mm
	408-5/64	HD Contact Tip 5/64-2.00mm
	408-3/32	HD Contact Tip 3/32-2.4mm
6	408P-035	Tapered HD Tip .035/0.9mm
	408P-040	Tapered HD Tip .04/1.0mm
	408P-045	Tapered HD Tip .045/1.2mm
	408P-052	Tapered HD Tip .052/1.4mm
	408P-.062	Tapered HD Tip .062/1.6mm
8	150-12-403	10mm Contact Tip .045/1.2mm
	150-14-403	10mm Contact Tip .052/1.4mm
	150-16-403	10mm Contact Tip .062/1.6mm

Contact Tips

4	409-030	Stand. Tip .030/0.8mm
	409-035	Stand. Tip .035/0.9mm
	409-040	Stand. Tip .040/1.0mm
	409-045	Stand. Tip .045/1.2mm
	409-062	Stand. Tip .062/1.6mm
5	407-030	Pipeline Tip .030/0.8mm
	407-035	Pipeline Tip .035/0.9mm
	407-045	Pipeline Tip .045/1.2mm
7	150-09-130	8mm Contact Tip .035/0.9mm
	150-10-130	8mm Contact Tip .040/1.0mm
	150-12-130	8mm Contact Tip .045/1.2mm
	150-14-130	8mm Contact Tip .052/1.4mm
	150-16-130	8mm Contact Tip .062/1.6mm
10	425	Gas Head 1/2-20 (409 Tip)
	425B	Gas Head 1/4" NTP (409 Tip)
	426	Gas Head 1/2-20 (408 Tip)
	426B	Gas Head 1/4" NTP (408 Tip)
12	03M8-424	Gas Head 1/2-20 (150-xx-130 Tip)
	03M8-424B	Gas Head 1/4" NTP (150-xx-130 Tip)
	03M8-524	Gas Head 9/16-18 (150-xx-130 Tip)
13	03M10-424	Gas Head 1/2-20 (150-xx-403 Tip)
	03M10-424B	Gas Head 1/4" NTP (150-xx-403)
	03M10-524	Gas Head 9/16-18 (150-xx-403 Tip)

GAS HEADS

9	424	Gas Head 1/2-20 (408 Tip)
	424B	Gas Head 1/4" NTP (408 Tip)
	525	Gas Head 9/16-18 (409/407 Tip)
11	03-424	Gas Head 1/2-20 (408 Tip)
	03-424B	Gas Head 1/4" NTP (408 Tip)
	03-425	Gas Head 1/2-20 (409 Tip)
	03-425B	Gas Head 1/4" NTP (409 Tip)
	03-524	Gas Head 9/16-18 (408 Tip)
	03-525	Gas Head 9/16-18 (409 Tip)

Liners

52	431##	Liner .035-.045
	431##P	Premium Liner .035-.045
	441##P	Premium Liner .035-.045
	443##	Liner .045-.062
	443##P	Premium Liner .045-.062
	43115X	Nylon Liner .035-.045
	43115T	Teflon Liner .035-.045
	44315X	Nylon Liner .045-.062
	44315T	Teflon Liner .045-.062
	453##P	Premium liner 5/65

Liners

51	44-3545-##	Liner .035-.045
	44-3545XXP	Premium Liner .035-.045
	44-045-##P	Premium Liner .035-.045
	44-116-##	Liner .045-.062
	44-116-##P	Premium Liner .045-.062
	44-3545-15X	Nylon Liner .035-.045
	44-3545-15T	Teflon Liner .035-.045
	44-116-15X	Nylon Liner .045-.062
	44-116-15T	Teflon Liner .045-.062

(## = Liner Length 15 - 20 or 25 feet)

(## = Liner Length 15 - 20 or 25 feet)

WARNING !!!

READ ALL SAFETY INSTRUCTION BEFORE USE

ELECTRIC SHOCK CAN KILL

- Always disconnect power source before installing or removing welding gun or changing tips and nozzles.
- Ensure work area is dry and free of standing water.

ARC RAYS can Burn Skin and Damage Eyes

- Always wear an approved welding helmet with proper grade filter lens.
- Always wear proper protective gloves and clothing to cover exposed skin from UV and spatter burns.

Gases and Fumes can be hazardous to you health

- Ensure proper ventilation or exhaust is used to keep gases and fumes from your breathing zone.
- Wear a OSHA approved breathing respirator or mask.

Excessive Noise can cause hearing damage

- Always wear protective hearing devices when noise levels exceed OSHA Standards.

KENT WELDING GUN

1249 Plessis Road, Winnipeg, Manitoba, Canada

Ph. (204) 667-7555 Fax (204) 667-0060 Toll Free 1-800-427-0430 www.kentweldinggun.com